



TECHNOSCOPE F27

Throughout the history of cinema, the telescopic camera crane has been the foundation of some of the most stunning long takes and complex camera movements. The Filmotechnic Technoscope is a new series of ultra-lightweight and compact telescopic camera cranes, which are easy to deliver, assemble and operate in hard-to-reach places.

The Technoscope's smooth and quiet operation makes it perfect for indoor use. The Mitchell mount allows the telescopic boom to be mounted on any camera dolly or any other Mitchell mount platform. The crane can be powered by either battery or a 110V/220V power supply.

The Technoscope is the perfect crane to work with any lightweight remote head, making this technology more accessible than ever before.



HIGHLIGHTS

- User-friendly interface
- Intuitive and ergonomic controller 'pickle'
- Compact in size and small footprint
- A telescopic column with Mitchell Mount
- Stable base with pneumatic and standard track wheels
- Durable and state-of-the-art carbon fiber design
- Vertical Arc/Horizontal Wall Compensation
- Four preset positions, speed, acceleration, deceleration
- Adapter for all popular lightweight stabilized heads
- Battery-powered with long-lasting autonomy
- Optional power supply unit available 24-48 DC

SPECIFICATIONS

Total Weight Crane 276kg / 608lbs
Base Weight 66kg / 145lbs
Leveling Jacks Weight 20.8kg / 46lbs
Column Weight 52kg / 115lbs
Arm Weight 112kg / 245lbs
Max Nose Load 27kg / 60lbs

Total Counterweights 296kg / 652lbs
2 Weight Carts

Max Lens Height 7.4m / 24' 3"
Telescoping Range 6.8m / 22' 3"
Telescoping Speed 2.2m/sec
Min. Door Height 1.78m / 5' 10"

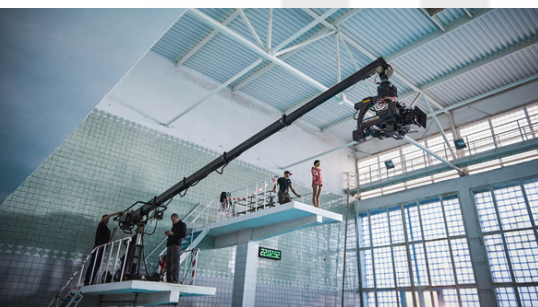
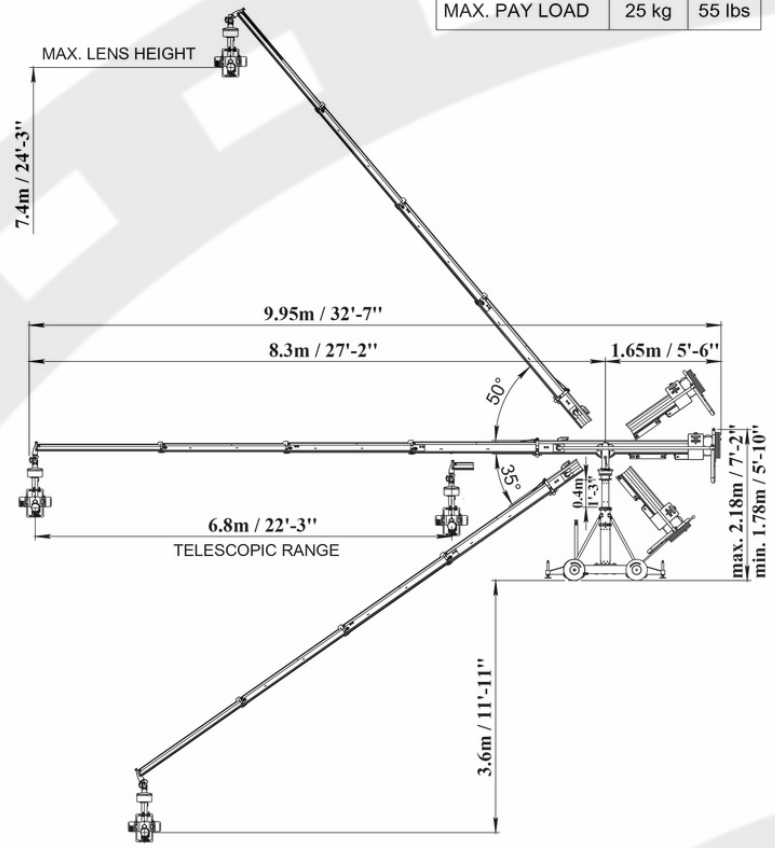
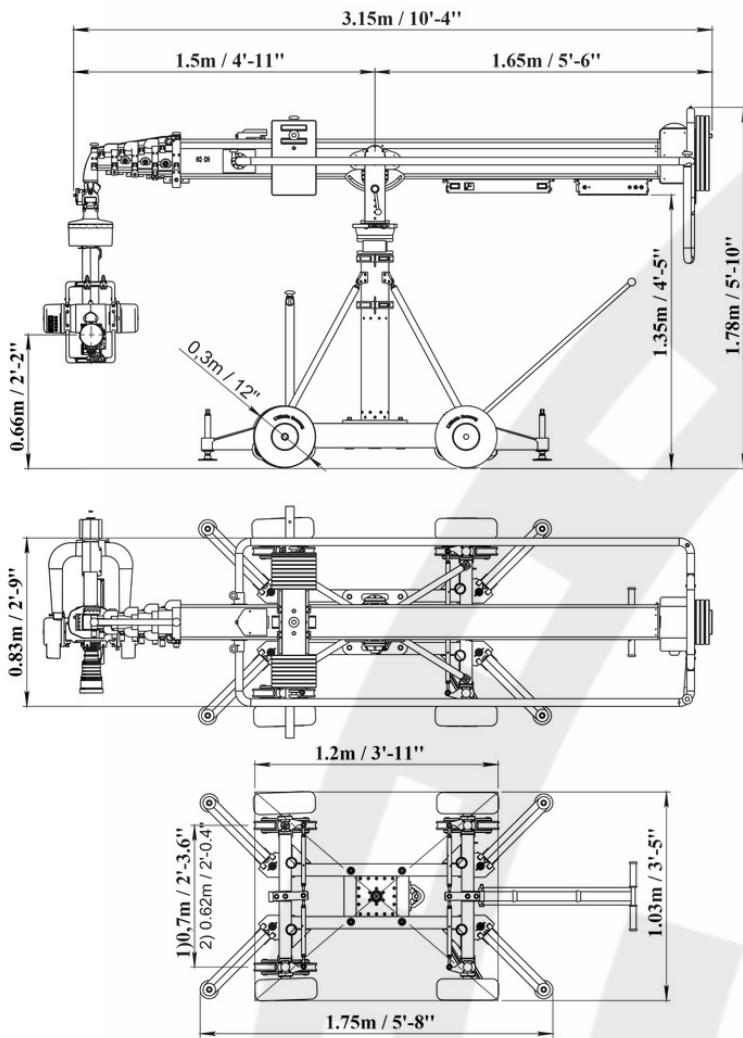
Operating Temp -20°C to +40°C

POWER REQUIREMENTS

110/220 VAC - 50/60Hz
24-48 VDC
Peak Power: 1.8kW

filmotechnic

MAX. PAY LOAD 25 kg 55 lbs



filmotechnic

ENGINEERING CINEMATOGRAPHY SINCE 1990

+1 213 378 6636 | HELLO@FILMOTECHNIC.LA | WWW.FILMOTECHNIC.LA
 WWW.FILMO.TECH