



TECHNOSCOPE F17

Throughout the history of cinema, the telescopic camera crane has been the foundation of some of the most stunning long takes and complex camera movements. The Filmotechnic Technoscope is a new series of ultra-lightweight and compact telescopic camera cranes, which are easy to deliver, assemble and operate in hard-to-reach places.

The Technoscope's smooth and quiet operation makes it perfect for indoor use. The Mitchell mount allows the telescopic boom to be mounted on any camera dolly or any other Mitchell mount platform. The crane can be powered by either battery or a 110V/220V power supply.

The Technoscope is the perfect crane to work with any lightweight remote head, making this technology more accessible than ever before.



HIGHLIGHTS

- User-friendly interface
- Intuitive and ergonomic controller 'pickle'
- Compact in size and small footprint
- A telescopic column with Mitchell Mount
- Stable base with pneumatic and standard track wheels
- Durable and state-of-the-art carbon fiber design
- Vertical Arc/Horizontal Wall Compensation
- Four preset positions, speed, acceleration, deceleration
- Adapter for all popular lightweight stabilized heads
- Battery-powered with long-lasting autonomy
- Optional power supply unit available 24-48 DC

SPECIFICATIONS

Total Weight Crane 102.8kg / 227lbs
Base Weight 24kg / 53lbs
Leveling Jacks Weight 4.8kg / 10.5lbs
Tripod Weight 24kg / 53lbs
Arm Weight 50kg / 110lbs
Max Nose Load 25kg / 55lbs

Total Counterweights 208kg / 458lbs
2 Weight Carts

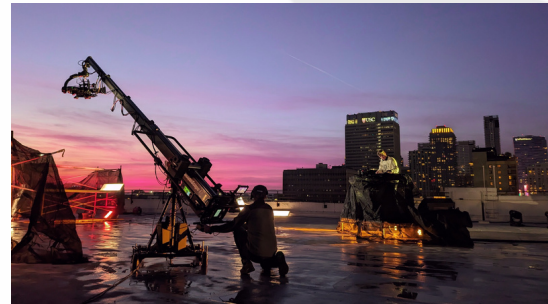
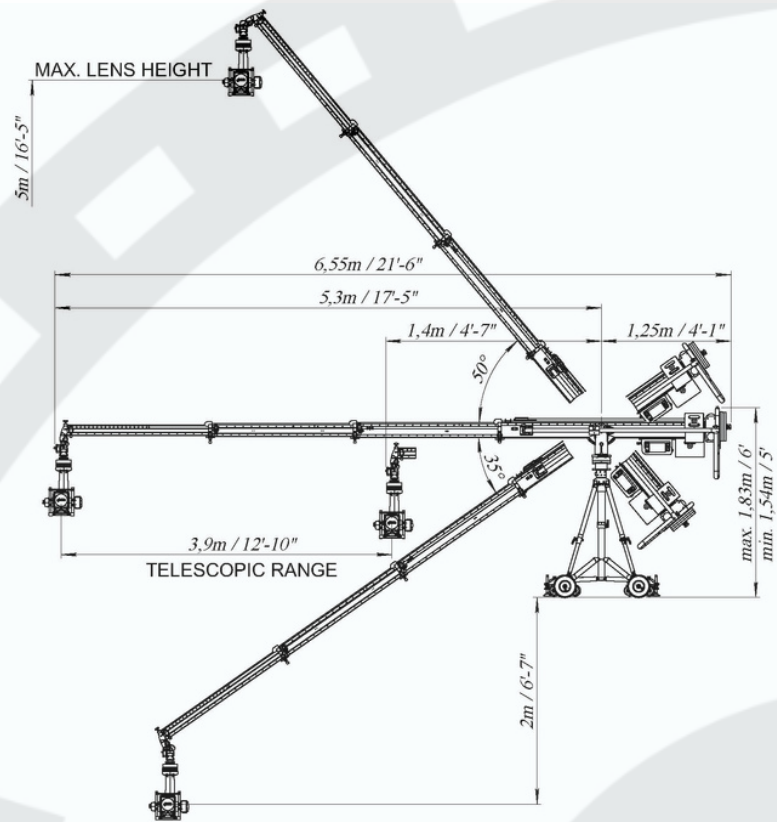
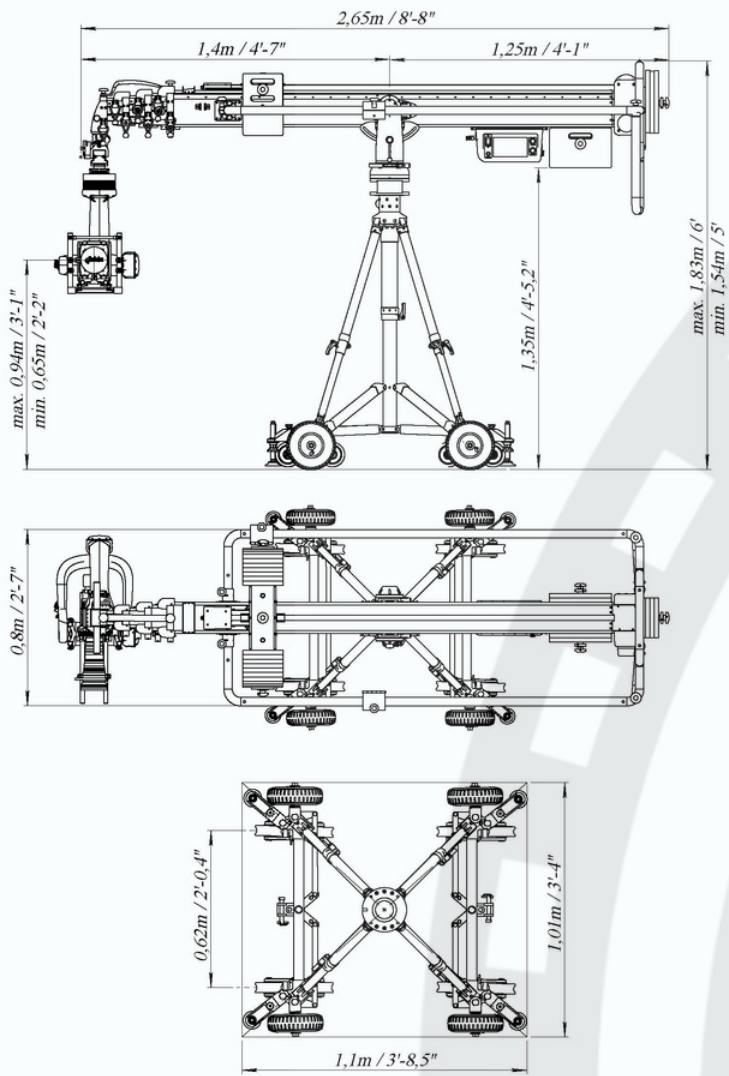
Telescoping Range 3.9m / 12' 10"
Telescoping Speed 2.2m/sec
Min. Door Height 1.55m / 5' 1"
Max Lens Height 5m / 16' 5"

Operating Temp -20°C to +40°C

POWER REQUIREMENTS

110/220 VAC - 50/60 Hz
24-48 VDC
Peak Power: 1.6 kW

filmotechnic



filmotechnic

ENGINEERING CINEMATOGRAPHY SINCE 1990

+1 213 378 6636 | HELLO@FILMOTECHNIC.LA | WWW.FILMOTECHNIC.LA
WWW.FILMO.TECH